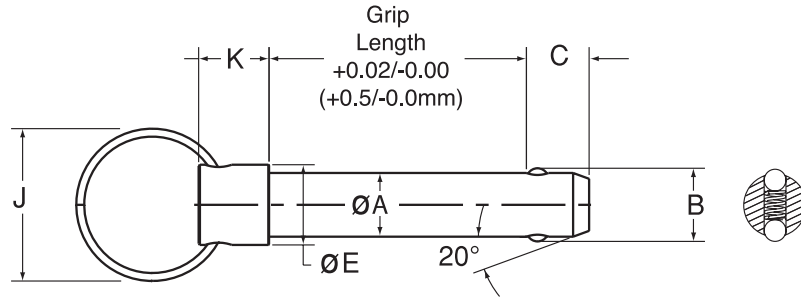
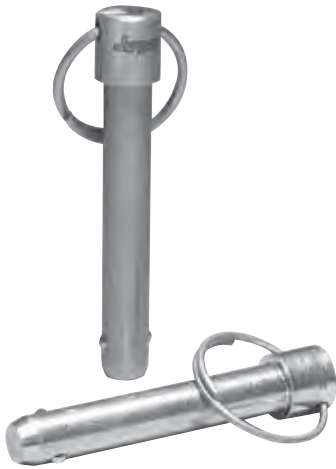




Heavy Duty Detent Pins



The Heavy Duty Detent Kwik-Lok® Pin is a high quality shoulder style alignment pin for applications that don't require the positive locking ball feature.

- Heavy duty spring and 2 spring loaded stainless steel locking balls provide high pull out force
- Body 17-4 PH heat treated stainless steel
- Includes split ring for easy attachment of optional lanyard
- Handle is 303 S.S.

Heavy Duty Detent Specifications – Inch

Nom. Pin Dia	Dia. +0.000/-0.003 A	Min. B	+0.00/-0.06 C	Dia. +/-0.015 E	Dia. J	K	Double Shear Strength – (lbs)	Pull Out Force (lbs)	Recommended Hole Diameter	
							Stainless 17-4 PH		Max	Min
3/16 (#10)	.1885	.200	.250	.375	1.187	.50	5,262	2 to 7	0.1940	0.1900
1/4	.2480	.280	.344	.375	1.187	.50	9,537	2 to 7	0.2540	0.2500
5/16	.3105	.360	.359	.438	1.187	.50	15,075	2 to 7	0.3165	0.3125
3/8	.3730	.430	.390	.500	1.187	.50	22,050	6 to 14	0.3790	0.3750
7/16	.4355	.495	.469	.625	1.187	.55	30,438	6 to 14	0.4425	0.4375
1/2	.4980	.570	.516	.625	1.187	.55	39,263	10 to 22	0.5050	0.5000
9/16	.5605	.645	.593	.625	1.687	.55	49,731	15 to 30	0.5675	0.5625
5/8	.6230	.720	.672	.750	1.687	.55	61,736	15 to 30	0.6300	0.6250
3/4	.7480	.860	.750	.875	1.687	.55	88,442	15 to 30	0.7570	0.7500
7/8	.8730	1.030	.859	1.000	2.187	.55	121,500	20 to 35	0.8820	0.8750
1	.9980	1.160	.984	1.125	2.187	.55	158,998	20 to 40	1.0100	1.0000

Heavy Duty Detent Specifications – Metric

Nom. Pin Dia	Dia. +0.000/-0.080 A	Min. B	+0.0/-1.5 C	Dia. +/- 0.4 E	Dia. J	K	Double Shear Strength – (kN)	Pull Out Force	Recommended Hole Diameter	
							Stainless 17-4 PH		Max	Min
5	4.95	5.23	6.35	9.53	30.15	12.7	25	9 to 31	5.1	5
6	5.95	6.88	8.74	9.53	30.15	12.7	36	9 to 31	6.1	6
8	7.95	9.35	9.12	11.13	30.15	12.7	69	9 to 31	8.1	8
10	9.95	11.58	9.91	12.70	30.15	12.7	107	26 to 62	10.1	10
12	11.95	13.84	13.11	15.88	30.15	14.2	154	44 to 97	12.1	12
16	15.95	18.54	17.07	19.05	42.85	14.2	275	66 to 133	16.1	16
20	19.95	22.91	19.05	22.23	42.85	14.2	433	89 to 155	20.15	20
25	24.95	29.18	24.99	28.58	55.55	14.2	682	89 to 178	25.15	25

Dimensions in millimeters

May be ordered with 4 locking balls for additional locking element tensile strength. Special Materials, grip length and longer “C” dimensions upon request.



Heavy Duty Detent Pins – Inch

Stainless Steel – Stainless Steel, 17-4 PH

Pin Dia	Grip Length (In)												
	0.5	0.75	1	1.25	1.5	1.75	2	2.5	3	4	5	6	
PART NUMBERS	3/16	804200	804201	804202	804203	804204	804205	804206	804208	804209	804211	804213	804215
	1/4	804216	804217	804218	804219	804220	804221	804222	804224	804225	804227	804229	804231
	5/16	804232	804233	804234	804235	804236	804237	804238	804240	804241	804243	804245	804247
	3/8	804248	804249	804250	804251	804252	804253	804254	804256	804257	804259	804261	804263
	7/16	804264	804265	804266	804267	804268	804269	804270	804272	804273	804275	804277	804279
	1/2	804280	804281	804282	804283	804284	804285	804286	804288	804289	804291	804293	804295
	9/16	804296	804297	804298	804299	804300	804301	804302	804304	804305	804307	804309	804311
	5/8	804312	804313	804314	804315	804316	804317	804318	804320	804321	804323	804325	804327
	3/4	804328	804329	804330	804331	804332	804333	804334	804336	804337	804339	804341	804343
	7/8	804344	804345	804346	804347	804348	804349	804350	804352	804353	804355	804357	804359
	1	804360	804361	804362	804363	804364	804365	804366	804368	804369	804371	804373	804375

Heavy Duty Detent Pins – Metric

Stainless Steel – Stainless Steel, 17-4 PH

Pin Dia	Grip Length (Metric)												
	10	15	20	25	30	40	50	60	70	80	90	100	
PART NUMBERS	5	854000	854001	854002	854003	854004	854005	854006	854007	854008	854009	854010	854011
	6	854012	854013	854014	854015	854016	854017	854018	854019	854020	854021	854022	854023
	8	854024	854025	854026	854027	854028	854029	854030	854031	854032	854033	854034	854035
	10	854036	854037	854038	854039	854040	854041	854042	854043	854044	854045	854046	854047
	12	854048	854049	854050	854051	854052	854053	854054	854055	854056	854057	854058	854059
	16	854060	854061	854062	854063	854064	854065	854066	854067	854068	854069	854070	854071
	20	854072	854073	854074	854075	854076	854077	854078	854079	854080	854081	854082	854083
	25	854084	854085	854086	854087	854088	854089	854090	854091	854092	854093	854094	854095

Contact customer service for special sizes, materials or mil-spec (MIL-P-45952/1).

May be ordered with 4 locking balls for additional locking element tensile strength.